



# Epicor For Service Enterprises

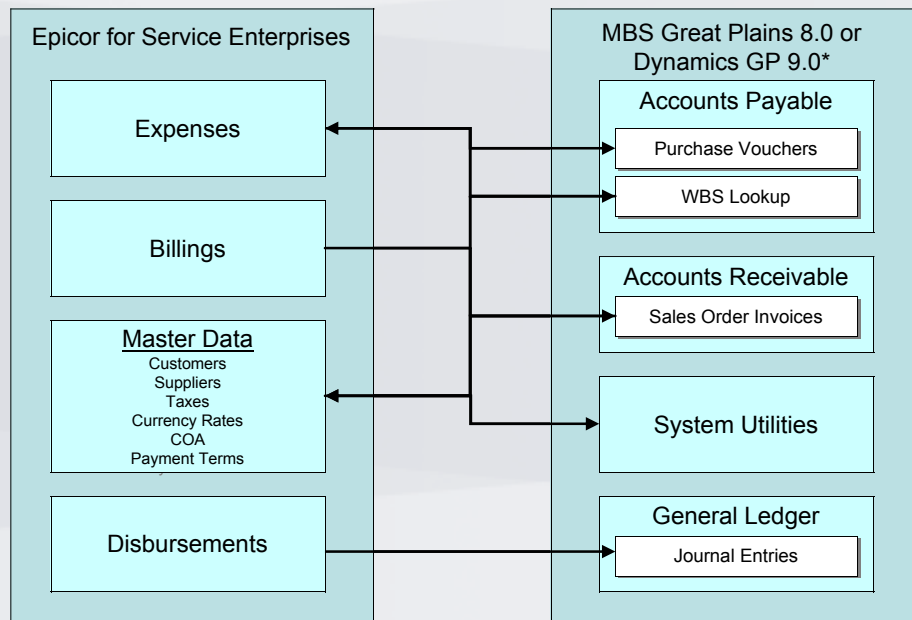
Epicor Integration Hub for Microsoft® Dynamics GP enables users of the Microsoft financial application to enjoy the benefits of Epicor’s award winning enterprise service automation (ESA) solution - Epicor for Service Enterprises. Epicor Integration Hub for Microsoft Dynamics GP provides a packaged interface via Dynamics eConnect to Epicor for Service Enterprises for users of both Microsoft Great Plains™ 8.0 and Microsoft Dynamics GP 9.0\*.

This creates a unique opportunity for businesses that do not wish to replace their current investment in back office financials, but are in need of substantial ESA capabilities over and above what might be available within Microsoft Dynamics GP.

## Epicor Integration Hub

Epicor Integration Hub (EIH) was written to facilitate a flexible, robust back office data flow. Since the inception of Epicor for Service Enterprises, the Integration Hub has provided the packaged mechanism for integration with Epicor Financial systems, and a toolkit for the development of integration with other financial applications. The release of the Epicor Integration Hub for Dynamics GP provides out-of-the box, Epicor-supported integration.

Epicor Integration Hub is a standard Epicor application and is developed and supported alongside the Epicor for Service Enterprises application.



*Epicor Integration Hub provides bi-directional points of integration between Epicor for Service Enterprises and Dynamics GP.*

The Integration Hub delivers both transaction and standing data integration between Microsoft Dynamics GP and Epicor for Service Enterprises. The following sections describe the key highlights of the standard integration and demonstrate the comprehensive nature of the integration.

**MANAGING MASTER FILE DATA**

Epicor for Service Enterprise is the primary source for the maintenance of static data such as customers and suppliers. Updates to customer data in Dynamics GP will be overwritten by incoming customer data from the Epicor Project Suite. A template document is available to define additional static data required by Dynamics GP. Information updated from the template may be adjusted in Dynamics GP without being overwritten. Additionally, Epicor for Service Enterprises can use the same general ledger chart of accounts structure as Dynamics GP.

**TRANSFER EXPENSES FROM PROJECT SUITE**

The approval of an expense in the Epicor Project Suite results in the creation of an invoice record in Dynamics GP Payables Management purchasing invoice entry. The Epicor Project Suite Supplier defined against the resource transfers as the Dynamics GP Payables Management Vendor.

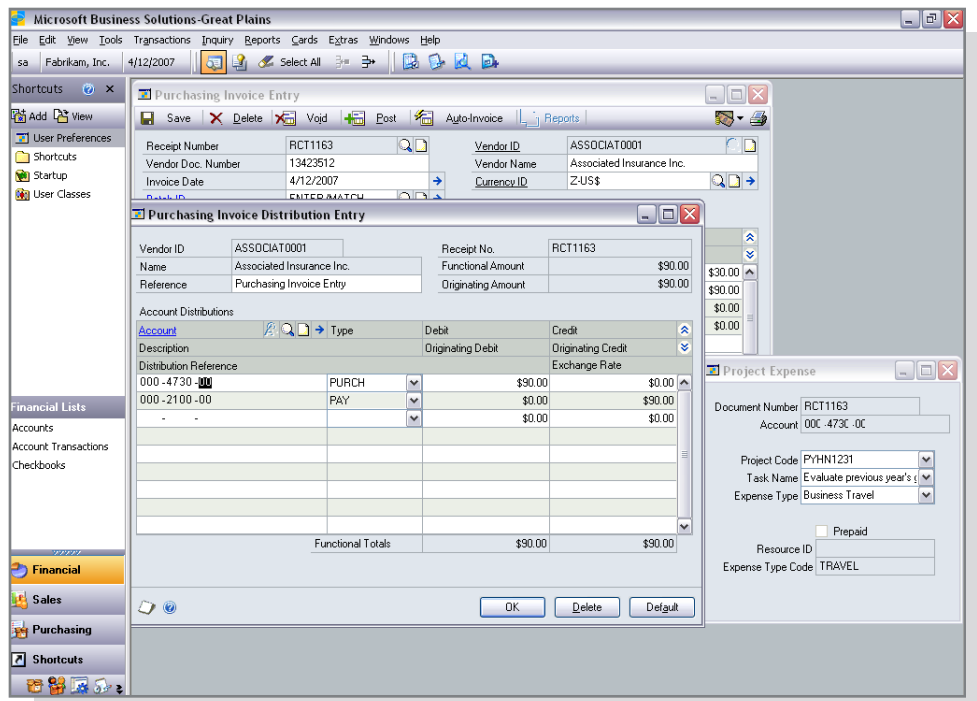
**PROCESS EXPENSE REVERSALS IN PROJECT SUITE**

The reversal of an expense in the Epicor Project Suite results in the creation of a Payables Management Debit Memo in Dynamics GP transaction entry.

**ENTER EXPENSES IN DYNAMICS GP**

An important part of the Epicor integration is the delivery of a new form in Dynamics GP payables and purchasing entries to enable project expenses to be allocated to the correct Epicor for Service Enterprises Project/Task and Expense type combination. This allows the association of a project, task and expense type with the Dynamics GP purchasing invoice records.

*Dynamics GP project expense entry supports line item level coding of expenses to projects, tasks and activities.*



The entry and processing of a record in either of Dynamics GP Payables Management, Receiving or Purchasing results in an approved expense in Epicor Project Suite. All expenses transferred to Epicor Project Suite are associated with a Supplier and a Project Code/Task. Epicor Project Suite accounting recognizes the transactions as miscellaneous expenses.

**PROCESS DISBURSEMENTS IN PROJECT SUITE**

The entry of journal transactions, project transfers and other miscellaneous entries within Epicor for Service Enterprises Disbursement Entry create, on posting, Dynamics GP General Ledger journal transactions.

## INTEGRATION DETAILS

## FROM EPICOR PROJECT SUITE:

- Expense transactions to Dynamics GP Payables Management invoices.
- Billing transactions to Dynamics GP Receivables Management invoices.
- Disbursements and Journal transactions to Dynamics GP General Ledger Journals.

## TO EPICOR PROJECT SUITE:

- Payables Management invoices with a new form and tables in Dynamics GP allow entry of project data and store expense transactions in Epicor.
- Purchasing transactions (Purchasing, Receiving and Purchase Matching) enter and store project expense transactions in Epicor.

## MASTER FILE DATA SYNCHRONIZATION:

- Customers
- Vendors
- Chart of Accounts
- Project Codes, Tasks and Expense Types
- Taxes
- Currency Rates
- Payment Terms
- Sales Persons
- Fiscal Year Periods
- Company Home Currency

**TRANSFER BILLINGS AND PROCESS CREDITS**

The generation of invoice entries in Epicor Project Suite creates invoice records in Dynamics GP Receivables Management sales transaction entry. The Epicor Project Suite Customer for the record transfers as a Dynamics GP Customer.

The integration transfers Epicor for Service Enterprises time, expense, and material transactions. Approval of a transaction triggers the transfer. Entry of credits in the Epicor Project Suite creates Credit Memos in Dynamics GP Receivables Management Sales transaction entry.

**HANDLING DATA TRANSFER ERRORS**

The rigorous nature of Epicor Integration Hub is emphasized by the handling of possible data transfer errors. Errors may result from inconsistencies in data entered in the Dynamics GP database and the Epicor for Service Enterprises database. A user is able to correct the majority of errors by updating data in the Dynamics GP maintenance forms. Within Epicor for Service Enterprises a Financial Interface Error Log form provides the facility to view errors that occur when data transfers between the Epicor Project Suite and Dynamics GP.

**DYNAMICS GP eCONNECT**

Epicor Integration Hub provides connectivity with Dynamics GP through eConnect. The full version of eConnect is required to facilitate the integration. Additionally, since Epicor for Service Enterprises passes expense and revenue transaction to Dynamics GP at a detail line item as well as header level, users of the integration will require Dynamics GP Distribution capabilities (Purchasing and Sales Order Entry) to complement Payables and Receivables Management.

**Epicor and Microsoft**

Founded in 1984, Epicor helps deliver enterprise-level business functionality with a low total cost of ownership, by keeping integration and support costs in check. Epicor has been a pioneer in adapting new technologies such as Web services and the Microsoft .NET™ Framework to build its next-generation Web-based enterprise solutions, like Epicor for Service Enterprises. Furthermore, Epicor is at the vanguard for close integration with the world of Microsoft Office and Information Worker initiatives. This application of technology helps Epicor customers derive higher levels of efficiency and business performance through a single-source enterprise solution.

For more information on Epicor for Service Enterprises, contact your authorized Epicor Partner or call Epicor at +1 949 585 3700 (U.S. and Canada) or 503-612-2600 (international), visit us on the Web at [www.epicor.com](http://www.epicor.com), or e-mail us at [info@epicor.com](mailto:info@epicor.com).

\* Support for Dynamics GP 9.0 is currently under development; please check for current availability.



Worldwide Headquarters 18200 Von Karman Avenue, Suite 1000, Irvine, California 92612 USA  
Phone: +1 949 585-3700 Fax: +1 949 585-4419 Visit our Web site at [www.epicor.com](http://www.epicor.com)

