

Assembly

EFFICIENTLY DEFINE BUILD PLANS

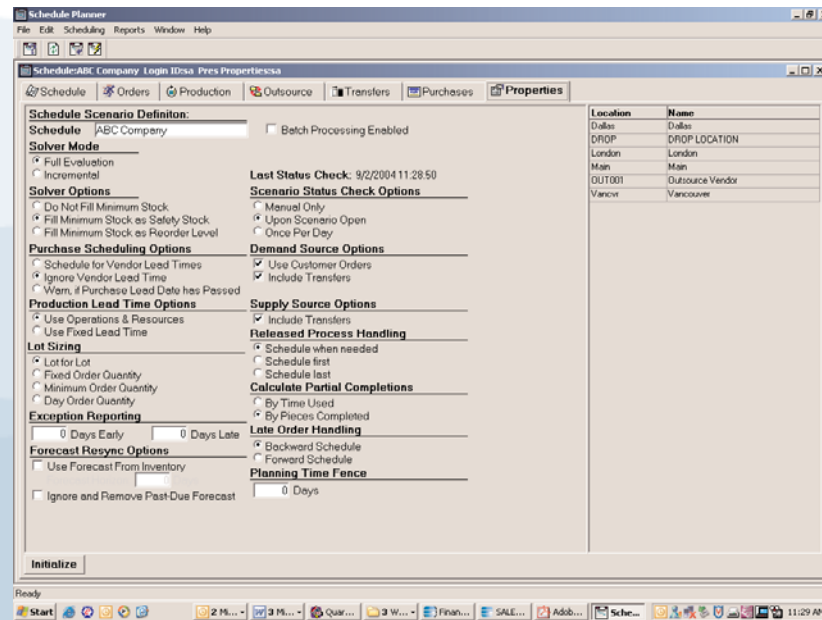
OPTIMIZE YOUR SCHEDULE

STREAMLINE YOUR ASSEMBLY OPERATIONS

ENSURE QUALITY CONTROL

Efficiently Define Build Plans

Epicor Supply Chain Management (SCM) streamlines complex item definition by using a build plan to define the materials and resources required to assemble a specific product. If required, you can specify multiple levels within the build plan. You can also define the sequence of operations, the lag time between operations, alternatives for resources and by-products.



Epicor Assembly includes two modules - Work Order Management and Schedule Planner. Together, these two modules enable a company to manage their manufacturing operations.

Optimize Your Schedule

Epicor SCM incorporates a scheduling solution that helps you manage ever-changing demands and resources by generating plans based on material and resource constraints. This solution, Schedule Planner, helps reduce inventory, work in process and cycle times, as well as improve on-time delivery rates, resource optimization and customer satisfaction. The application uses a finite scheduling model to balance demand — such as customer orders, minimum stocking levels and forecasts — against available resources.

Product build plans determine required resources and resource availability is determined by a resource calendar. The solution enables the creation of a production schedule that synchronizes demand, material requirements and resources. Schedule Planner also produces a suggested list of production and purchase orders that can be released once the schedule is approved.

The system highlights constraints, enabling you to proactively manage your inventory and resource issues. You are able to pinpoint the bottlenecks within your enterprise, so you can make informed decisions. Whether it's a material shortage or a changed customer order, you have the information to keep your operations running smoothly and on schedule.

DETAILED FEATURES

BUILD PLAN

- Combination of bill of material, bill of resources and bill of labor
- Definition of alternatives for items and resources in the build plan
- Location definition at line-item level to support different location-specific build plans
- Lag quantities defined to determine scheduling of operations

PRODUCTION CONTROL

- Agents to support outsourcing processes
- Backflushing for advanced manufacturing environments

- Update production usage by employee ID
- Bar-coding for production and inventory movements and completions
- User-defined holds
- Partially complete production orders

PLANNING AND SCHEDULING

- User configuration of schedule properties
- Unlimited "what-if" scenarios
- Finite scheduling
- Capacity planning capabilities
- Graphical view of schedule
- View of bottlenecks
- Firm-planned orders

- Suggested purchasing requirements
- Systemwide and resource-based calendars
- Scheduled downtime for resources
- Advanced forecast integration
- Exception report
- Capable-to-promise
- Multilocation scheduling
- Inclusion/exclusion of vendor lead times
- Inclusion/exclusion of customer orders
- Specification of order policy
- Extensive filtering capabilities
- Pooled resources
- Resource groups

QUALITY CONTROL

- Repository of standard tests with allowable results
- Assignment of standard tests to individual items
- Ability to scrap items or create return-to-vendor transaction
- Certificate of analysis
- Automatic assignment of items to QC after receiving or assembly process

Streamline Your Assembly Operations

Orders released from Schedule Planner are automatically sent to the shop floor to be executed through Epicor's flexible production control application. You are able to efficiently manage your work orders with the Work Order Management application and have the ability to track work orders throughout the manufacturing process.

If you tend to have long production runs, you can release partially completed work orders to inventory, even though the run is still being completed. Additionally, if you do repetitive assembly, you can easily backflush items.

Ensure Quality Control

With Epicor SCM, you are able to better control the quality of the items you purchase and assemble. Items can be flagged for quality control and automatically placed on hold for inspection. Afterward, they may be released to inventory, returned to a vendor or scrapped. You can track rejected goods based on user-defined reasons and use this information to monitor performance.

About Epicor and Epicor SCM

Epicor Software Corporation has long been a recognized leader in building world-class applications. Epicor Supply Chain Management Suite is no exception. Consisting of a number of modules, including Assembly, Epicor SCM can help you streamline your entire supply chain. For more information on Epicor SCM, contact your authorized Epicor Partner or call Epicor at 800-997-7528, or visit us on the Web at www.epicor.com.



5 Hill Street, PO Box 65 • Kitchener, ON, Canada • N2G 3X4
(O) 519-885-2040 • (F) 519-885-5674 • (TF) 866-565-3797



Worldwide Headquarters 18200 Von Karman Avenue, Suite 1000, Irvine, California 92612 USA
Phone: (949) 585-3700 Fax: (949) 585-4419 Visit our Web site at www.epicor.com

