

# Inventory Control

IMPROVE CONTROL

STREAMLINE INVENTORY DEFINITION AND MAINTENANCE

RAPIDLY SEARCH FOR INVENTORY ITEMS

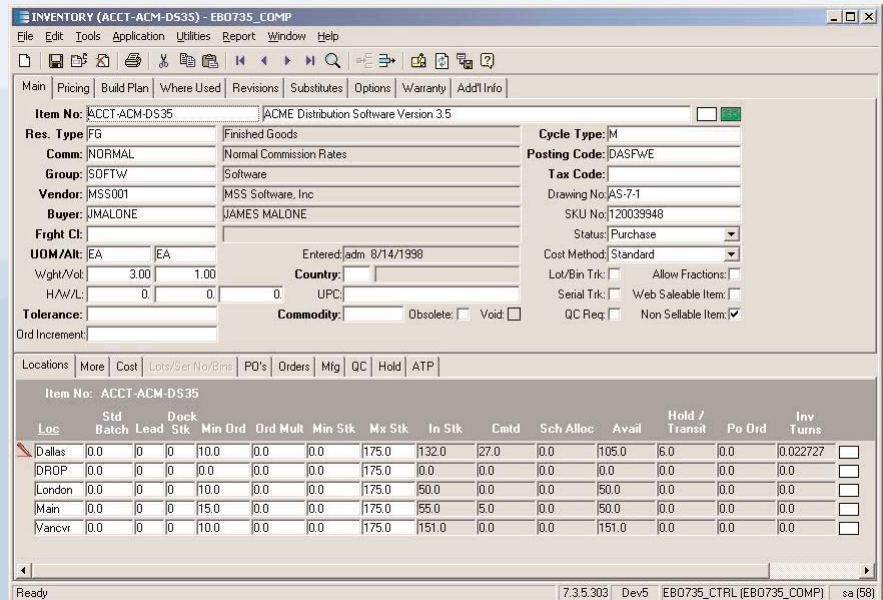
ACCURATELY FORECAST NEEDED STOCK LEVELS

MAINTAIN ACCURATE INVENTORY COUNTS

AUTOMATED DATA COLLECTION

## Improve Control

Epicor Supply Chain Management (SCM) provides the essential inventory management capabilities you need, whether it's as simple as maintaining a list of frequently purchased items or as complex as maintaining a multilocation distribution network. If you operate multiple locations, you can manage inventory at all of them with transfers between locations and bins, enabling you to track your inventory no matter where it is. With the Inventory Control Module, you can manage your inventory with the level of flexibility and control most appropriate for your business. It provides instant access to critical information, such as inventory availability, quantity on hand, reorder quantities and costs.



With Inventory Control, you can efficiently manage inventory in a single location or in multiple warehouse around the globe.

## Streamline Inventory Definition and Maintenance

Inventory setup and maintenance has been streamlined with Epicor SCM. The intuitive interface enables you to quickly set up items. Within Inventory Maintenance, you can define multiple user-defined item attributes. You can set up units of measure for stocking, purchasing and selling transactions. With Epicor SCM, you have the flexibility to cost inventory how you need to. The system can track inventory using standard cost, average, weighted average, first in first out (FIFO), or last in first out (LIFO).

If needed, you can copy an item and simply change a few attributes. Or, if setting up items that share a series of attributes, the SKU Generator can aid in setting up the item numbers, pricing, and additional information.

### Rapidly Search for Inventory Items

A company may stock thousands of items. In these cases, it is critical that a system can rapidly search through these items to find the items that meet the desired criteria. With Inventory Control, you can define a number of attributes — some system-defined and some user-defined — that can be used as criteria in inventory searches within Inventory Control and other areas of the SCM solution.

### Accurately Forecast Needed Stock Levels

Epicor SCM provides you with the capability to accurately plan for your inventory needs. The solution is integrated with a leading forecasting solution which can expertly select the best forecasting method for your data and handles all of the math — easily incorporating trends, seasonal patterns and the effects of promotions and other special events. Once you've developed an accurate forecast, you can use the inventory replenishment engine to use that forecast to help you plan purchasing requirements for the future.

You have the option of forecasting at a weekly or monthly level. You can also choose to incorporate lost sales into your sales forecast. A number of events can trigger a "lost sale" — short shipping an order, canceling or voiding an order, or simply manually entering a lost sale.

### Maintain Accurate Inventory Counts

With Inventory Control, you can accurately track the physical location of items throughout all of your warehouses. Flexible cycle counting and physical inventory features let you define how frequently to count for accurate information maintenance. You may elect to count all items in a location using the physical inventory feature. Alternatively, you can specify a subset of items to count using the cycle count feature. Count criteria can be a number of different things including ABC codes. Counts can be done using paper tags or using automated data collection devices.

### Automated Data Collection

If your tracking needs go beyond simply recording transactions via your PC, Epicor offers a solution that enables you to track your goods using bar-coding technology along with wired or wireless devices. Epicor Supply Chain Execution (SCE), a key component of Epicor SCM, offers automated data collection solutions — from the automation of specific transactions to a complete warehouse management system. For additional information, please see our brochure dedicated to the SCE solution.

### About Epicor and Epicor SCM

Epicor Software Corporation has long been a recognized leader in building world-class applications. Epicor Supply Chain Management Suite is no exception. Consisting of a number of modules, including Inventory Control, Epicor SCM can help you streamline your entire supply chain. For more information on Epicor SCM, contact your authorized Epicor Partner or call Epicor at 800-997-7528, or visit us on the Web at [www.epicor.com](http://www.epicor.com).

## DETAILED FEATURES

## ITEM DEFINITION AND MAINTENANCE

- Flexible 30-character item code that supports any combination of numbers and letters with extended description and extensive notes
- Online access to inventory quantity, status, location and cost information
- Unit of measure conversions to allow purchasing and storage in different units of measure
- Identify purchaser and selling unit of measure
- Attachment of audio, video and image files to an item and purchase order
- Fractional quantity purchases to support bulk commodities

- Support for negative inventory
- ABC ranking
- Minimum gross profit percentage
- Automatic generation of serial numbers upon receipt
- Finished goods, raw materials and WIP inventory
- Graphical view of build plan
- SKU Generator to streamline item setup
- Standard batch size
- Copy utility enables quick replication of item information including build plan
- Utility for updating standard cost for a group of items
- LIFO, FIFO, Average, Standard and Weighted Average Costing

## INVENTORY TRACKING AND MOVEMENT

- Easy-to-use transaction entry forms to issue items and make adjustments
- Physical inventory
- Cycle counting
- Lot and bin tracked items
- Unlimited number of locations, with transfers between locations and bins

## INVENTORY STATUS AND REPLENISHMENT

- Views of inventory committed to customer and manufacturing orders, on hold for quality control, and expected from purchases and manufacturing

- Location-specific minimum and maximum reorder points for inventory replenishment planning
- Ability to move a job into inventory
- Sophisticated inventory forecasting techniques used to optimize inventory costs and customer service
- Forecast at the weekly or monthly levels, incorporate lost sales and customer-specific forecasts
- Buyer's workbench to manage order placement, purchase order releases and inventory transfers between sites



5 Hill Street, PO Box 65 • Kitchener, ON, Canada • N2G 3X4  
(O) 519-885-2040 • (F) 519-885-5674 • (TF) 866-565-3797



Worldwide Headquarters 18200 Von Karman Avenue, Suite 1000, Irvine, California 92612 USA  
Phone: (949) 585-3700 Fax: (949) 585-4419 Visit our Web site at [www.epicor.com](http://www.epicor.com)

