

# Bill of Materials

Vantage supports traditional BOM management with single-level part formats that recognizes the materials and components required to build end parts. In addition, Vantage introduces multi-level BOM management that incorporates not only single-level components and material requirements, but also internal and external routing steps for complete end assembly visibility, planning, scheduling, and costing. Vantage introduces visual engineering technology with indented tree structures and drag-and-drop BOM management.

### METHODS OF MANUFACTURING

Manage product BOM and routings in one central location. Part specific methods of manufacturing are controlled through engineering and offers drill-down functionality to lower level subcomponents along with material and routing components required for each.

### DRAG-AND-DROP INTERFACE

Use a simple tree interface to easily drag-and-drop components, operations or direct materials from another BOM, quote or previously run job.

### VISUAL BOM DISPLAY

Easily see the structure of a product, including multi-level components and subcomponents.

### SAME-AS-EXCEPT

Manage BOMs easily with "get detail" functionality that enables the user to pull an existing method of manufacturing for a product and make modifications for future runs or similar products.

### ALTERNATE BOM

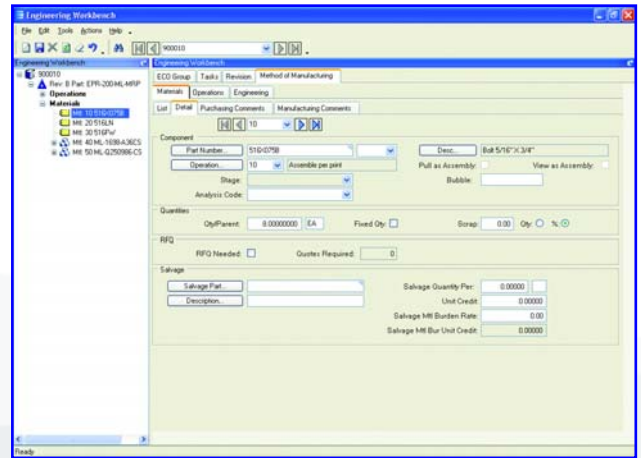
Use alternate BOMs to predefine multiple BOM structures for the same part with perhaps material or component substitutions. In a multi-plant environment, BOMs at the plant level facilitate choices of where to build the part using plant appropriate methods. Optionally have several BOMs within a plant for the planner to choose the most cost-effective build.

### EXPANSIVE PART NUMBER

Use up to 50 characters in part length for a part number. System settings optionally designate maximum length of the part ID used.

### DOCUMENT LINKING

Link product specific documentation (e.g., electronic drawing and machine instructions) for easy access and document control using document management.



Use the engineering workbench to build a visual view of a new bill of materials, accessing similar structures and revision levels.

### COSTS STORED

Besides material costs, additional costs for manufactured parts (e.g., labor, burden and subcontracting) are stored and monitored within the BOM structure.

### COST REPLACE

The cost replace function rolls up costs from the BOM and updates the finished goods inventory file.

### REQUIREMENTS REPORTING

A summarized material option, in addition to the standard indented BOM requirement report, is available to provide total requirements for each material.

### CRITICAL PATH VIEW

Easily view the critical path for the product.

### PHANTOM STRUCTURES

Stock assemblies in inventory or maintain phantom assembly structures, giving you the flexibility to process complex jobs without having to first establish a complete BOM.



Accounting Software Solutions for Your Business  
WWW.SECOND-FOUNDATION.COM

5 Hill Street, PO Box 65 • Kitchener, ON, Canada • N2G 3X4  
(O) 519-885-2040 • (F) 519-885-5674 • (TF) 866-565-3797



Worldwide Headquarters 18200 Von Karman Avenue, Suite 1000, Irvine, California 92612 USA  
Phone: (949) 585-3700 Fax: (949) 585-4419 Visit our Web site at [www.epicor.com](http://www.epicor.com)