

Engineering Change and Revision Control

Achieve control and consistency in your engineering change and revision process. Engineering Change and Revision Control is designed to enable engineering change management, multiple revision control of products, engineering workflow management, and offers detailed cost analysis of products during the engineering process.

ENGINEERING WORKBENCH

Give engineers an area to manage all engineering tasks related to the modification, review and approval of assemblies, including: full revision updating and control, check-out procedures, security, engineering change orders, BOM maintenance, what-if BOM maintenance, what-if cost rollups, adding parts, placing parts on hold, and product routing maintenance. The engineering workbench also enables engineers to drill into all related information (e.g., jobs, inventories, sales orders, and quotes).

ENGINEERING APPROVAL

Enforce the approval of a method before it can be pulled into a job or quote.

MULTIPLE REVISION CAPABILITIES

Store and manage every revision of a product individually along with effectivity dates, historical change and audit logs.

REVISION EFFECTIVITY

Manage revision by effectivity date.

POWERFUL SEARCH

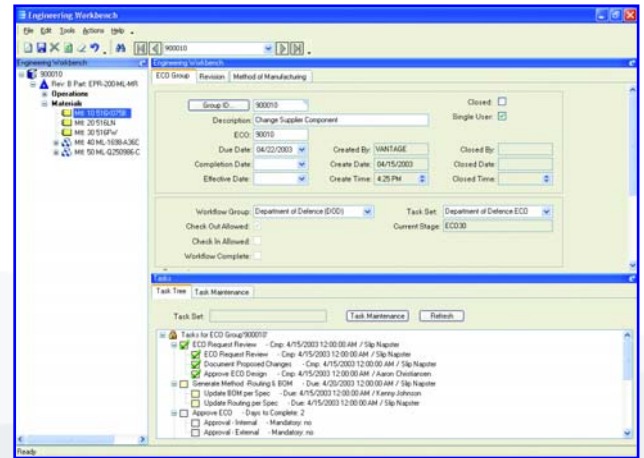
Look for previously used parts by creating a quick wild card search of all parts in the system.

REVISION CONTROL

Employ complete revision tracking of fields that you specify, including an audit trail of date, user ID and description of the change.

REVISION COMPARE

Dynamically and visually compare product methods for product plans that change before the product is complete. Easily compare methods of manufacturing for any part to a quote or job for the part and visually see the changes highlighted in color.



View revisions related to a part and their approval status.

ENGINEERING WORKFLOW

Automatically assign and route the work needed to process changes as well as the process for engineering new products. Tasks are tightly embedded into the system ensuring that transactions can only be updated if the task is at the right status.

WHERE-USED

By displaying every product or assembly in which a specified component is used, you are able to identify those parts that would be affected by a design change or material substitution being considered.

MASS REPLACE/DELETE

Efficiently update all BOM structures when engineering changes occur.

EXPRESS CHECK-OUT

Use express check-out, designed for quick-change environments, for quick check-in and check-out of parts.



5 Hill Street, PO Box 65 • Kitchener, ON, Canada • N2G 3X4
(O) 519-885-2040 • (F) 519-885-5674 • (TF) 866-565-3797



Worldwide Headquarters 18200 Von Karman Avenue, Suite 1000, Irvine, California 92612 USA
Phone: (949) 585-3700 Fax: (949) 585-4419 Visit our Web site at www.epicor.com