

Job Management

Job Management is a comprehensive manufacturing control solution, designed specifically for the routing, scheduling, costing, and tracking of either custom or repetitive parts manufactured on the shop floor.

Job entry for a repeat part takes minimal effort. Analysis tools provide the quick and accurate reference necessary for re-quoting a part or identifying the types of work at which your company is most profitable.

PLANNING WORKBENCH

Access all job related actions in a single view — the creation of new jobs, changing job requirements to match changing demand, and allocating and reallocating jobs to satisfy changing customer demand. The planning workbench allows seamless access to the scheduling board for more detailed job management.

JOB MANAGER

Quickly review the relationship between production jobs and demand. Make changes to the production plan to accommodate new and changing demand.

JOB COSTING

Compare actuals to estimates, review job costing for materials, material burden, subcontracting, operations (labor/burden), and compare projected and actual billings for profitability analysis. Job costing can be performed on a job-by-job, customer, part product group, or overall company basis.

ORDER-TO-JOB LINKING

Handle one job or one delivery, one job or multiple deliveries, blanket production runs, and internal work orders to build parts to finished goods inventory.

NEW/CHANGE ORDER NOTIFICATIONS

Verify that orders or changes don't fall through the cracks for viewing and selecting new orders and change orders from job entry. Optionally track all job changes via user ID, date and description.

DRAG-AND-DROP INTERFACE

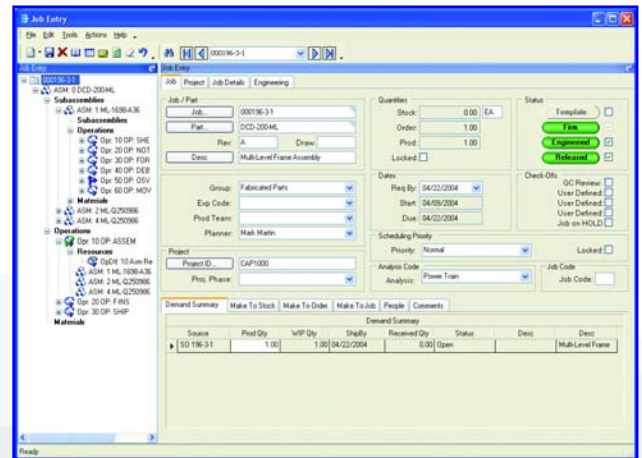
Use a simple tree interface to easily drag-and-drop components, operations or direct materials from another quote, BOM or previously run job.

PLANNED OVERPRODUCTION OF ASSEMBLIES

Produce and auto-receive overproduction quantities to inventory on a job.

BURDEN RATES

Set up burden as a fixed rate or a percentage of labor. Separate setup and production, projected labor and burden rates.



Provide detailed information to the shop floor about every aspect of a job.

ONLINE COST TRACKING

Review estimated versus actual costs by overall job and individual material, subcontracting and operation sequence.

ASSEMBLIES

Produce routings, costing and tracking of single- or multiple-level parts.

SCHEDULING

Schedule jobs based on forward, backward, finite and infinite capacity.

BACKFLUSH

Backflush labor and/or materials for a single assembly, branch or an entire job.

JOB TRACKER

Review a specific job, and check the status of all assemblies, operations and materials, including subcontract status.

QUALITY CONTROL

Track and analyze scrap, rework and added operations.

PRODUCTIVITY

Track and analyze efficiency and utilization figures by employee, operation, work center, and department.

MATERIAL SHORTAGE FLAG

Query material availability at the time of job entry to determine whether jobs can be started within the scheduled time period.

CUSTOMIZED VIEWS

Create customized views of the job information relevant to each user.



Accounting Software Solutions for Your Business.
WWW.SECOND-FOUNDATION.COM

5 Hill Street, PO Box 65 • Kitchener, ON, Canada • N2G 3X4
(O) 519-885-2040 • (F) 519-885-5674 • (TF) 866-565-3797



Worldwide Headquarters 18200 Von Karman Avenue, Suite 1000, Irvine, California 92612 USA
Phone: (949) 585-3700 Fax: (949) 585-4419 Visit our Web site at www.epicor.com