

Lean Manufacturing

With increased global competition and the advent of the Internet, customers have more influence than ever before. Customers are demanding greater product flexibility, smaller, more frequent deliveries and higher product quality, at a lower price.

Manufacturers are widening the scope and focus of lean manufacturing to encompass all processes that contribute to the bottom line. The true benefits of lean thinking will only be fully realized when the entire enterprise adopts the lean ideology.

Specific functionality has been developed in Vantage to more easily transition a manufacturer to lean principles.

MANUFACTURING WITHOUT WORK ORDERS (KANBAN FLOW)

Vantage embedded Kanban functionality (i.e., a signal to manufacture or move product) offers the functionality required to manage several types of systems for Kanban control. As inventory levels or order demand requires additional product, Kanbans, such as manufacturing real-time Kanbans, manufacturing flow Kanbans, purchase real-time Kanbans, and stock replenishment Kanbans, are automatically requested. The Kanban manages the stocking and order demand for parts flagged as needing Kanban control. User-defined rules enable parts to be flagged for Kanban control at the part, warehouse, or individual bin or cell location level.

CELL-BASED INVENTORY

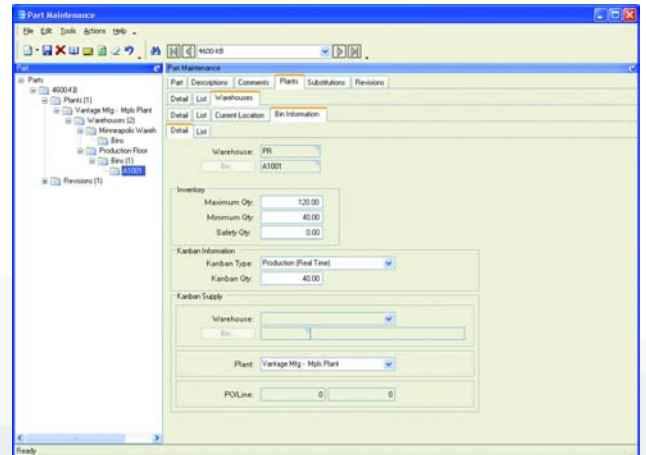
Manage, plan and replenish materials within a cell.

REAL-TIME MANUFACTURING KANBAN

Eliminate work orders and reduce on-hand inventories as parts are electronically triggered for replenishment as needed with real-time manufacturing Kanbans. Instead of planning for each order that is processed, parts are pulled through production as inventory or cell stocking levels fall below minimums. The cell is visually queued to produce based on the Kanban quantity for the part at its warehouse, bin or cell location.

MANUFACTURING FLOW KANBAN

View future demand to dynamically calculate future replenishment Kanbans with the manufacturing flow Kanban. This gives downstream cells and suppliers visibility of future demand (although the actual Kanban events may differ during execution). As Kanbans are acted on, the downstream demand requirement is dynamically updated. All cells and suppliers have up-to-date visibility of future demand.



Establish electronic Kanbans to automatically generate material transactions.

REAL-TIME STOCK REPLENISHMENT KANBAN

Move inventory as it is needed in a particular manufacturing cell, shipping area or customer consignment location with the real-time stock replenishment Kanban using automatic triggering of stocked inventory.

REAL-TIME PURCHASE KANBAN

Use the real-time purchase Kanban to replenish directly from the supplier and notify purchasing that a stock replenishment is required. Automatically send an e-mail to the supplier requesting additional inventory against an open purchase contract. Inventory can be received to the main stores, or directly to the production floor. Real-time purchase Kanban automates the replenishment of material from vendors and provides for visibility of current supply requests.

AUTOMATED MATERIAL FLOW

Authorize supplying cells to make a predefined quantity of an item being "pulled" by using operations.

SUPPORT FOR HYBRID APPROACHES TO LEAN

Employ a phased approach to implementing lean practices for tracking material, MRP and Kanban in a mixed environment. By offering manufacturers the choice, at the part location level, how the part will be managed, manufacturers can more easily migrate to lean, while synchronizing MRP and Kanban execution.



5 Hill Street, PO Box 65 • Kitchener, ON, Canada • N2G 3X4
 (O) 519-885-2040 • (F) 519-885-5674 • (TF) 866-565-3797



Worldwide Headquarters 18200 Von Karman Avenue, Suite 1000, Irvine, California 92612 USA
 Phone: (949) 585-3700 Fax: (949) 585-4419 Visit our Web site at www.epicor.com