

Material Requirements Planning

Built for the needs of the single site as well as extended enterprise, MRP offers cross plant and cross company planning. Enhanced to offer plant source as well as product group sourcing of materials and assemblies, Vantage MRP automatically and visually extends the enterprise to efficiently manage supply and demand.

FORECAST

Enter general part forecasts or specific customer/part forecasts. MRP consumes the forecast with actual orders as they are received. View lower-level component requirements with long lead-times before the end part is released.

MASTER PRODUCTION SCHEDULE

Enter production forecasts for specific end parts using the MPS function. Perform an iterative process of entering a planned schedule, viewing the effect on your resources, then modifying the plan until you have achieved an optimal schedule.

MRP GENERATION

Run MRP with either net change or full MRP regeneration options. The MRP generation process balances the demand of customer orders and forecasts with the supply of jobs. As orders and forecasts change, MRP automatically adjusts corresponding jobs so you are in balance. MRP even reschedules your plant for you.

MATERIAL PLANNING

Create purchase order suggestions for inventory and purchased parts that are needed to complete production. Use lead-times and vendor price breaks to determine when the part should be ordered and at what price.

DYNAMIC LEAD-TIMES

Take into consideration variables such as the batch size, production calendar for a resource, the run rate of the resource utilized and the availability of material flagged as constrained in production schedules.

PART PLANNING TOOLS

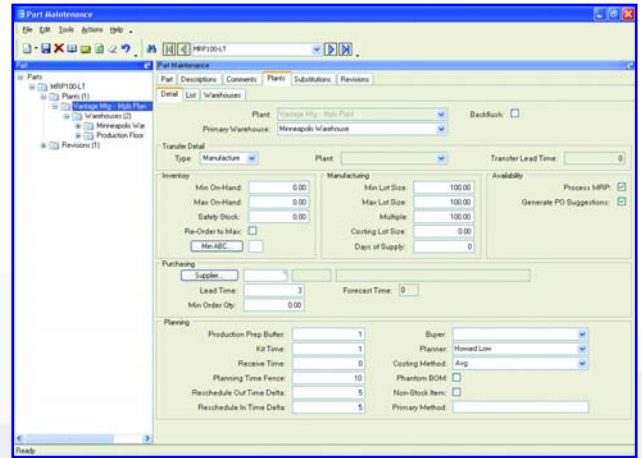
Account for production prep, kit and receipt time. Use this to derive appropriate lead-time for producing the product in addition to cycle times required to produce the product.

PLANNING HORIZON

Review the planning horizon of a part or resource, then plan to, but not beyond the horizon, preventing premature planning.

MULTI-SITE

Run MRP for all plants or for individual plants within a company. Changed schedule dates roll down to all subcomponents — even those being manufactured in another plant.



Maintain detailed criteria and options to use when running MRP.

MULTI-LEVEL PEGGING

Analyze all the supply and demand in your system, then peg each supply against demand, prioritized by due date. Because supply is calculated for every inventory item from all possible sources — regardless of whether demand exists — you are alerted to items that may be overstocked or obsolete.

SOURCING BY PLANT

Define a unique source per part or plant — whether its default sourcing is purchased, produced or transferred. What is produced in one location may be purchased — or transferred in — from another.

AVAILABLE-TO-PROMISE

View running balances with the available-to-promise function. Enter a quantity, and the system will find the earliest date that quantity will be available. Enter a date, and see how many parts are available on that day. MPS, forecast, order, and planned receipt quantities are visible to help you in your production planning tasks.

PLANNING TYPES

Maximize your planning accuracy with multiple types of inventory planning, including minimum/maximum/multiple, days of supply and run out.

BILL OF MATERIALS

MRP checks the revision level and verifies approvals before pulling in a standard BOM and routing. For parts that do not have a current approved revision, a job suggestion is created in the new/change order queue to help ensure requirements are not lost.

LOG FILE

See what changes were made by MRP in the log file.