

# Order Management

Order Management drives the Vantage ERP system. From the time an order is entered, its progress is tracked through final shipment, producing timely reports on demand.

With Order Management, all orders and change orders will be effectively managed online, perfecting the order-to-delivery process for maximum customer satisfaction.

**BLANKET ORDERS**

Establish multiple releases (either firm or not firm) for each sales order line and pull parts directly from inventory. Interface with Job Management to generate production orders.

**FLEXIBILITY**

Relate orders to jobs using one-to-one, many-to-one, one-to-many and many-to-many production strategies.

**CREDIT CHECKS**

Check customer credit status online at quote entry, order entry and shipment entry.

**MULTIPLE SHIP-TO ADDRESSES**

Track multiple ship-to addresses per order release.

**SHIP FROM MULTIPLE LOCATIONS**

Ship an order from multiple plants and multiple warehouses.

**ONLINE RESERVATION**

Hard reserve inventory while entering an order.

**BACKORDERS**

Automatically create backorders for lines shipped incomplete. Flexibility enables customer specific backorder parameters for complete order lines or complete orders to be set.

**SALES COMMISSION**

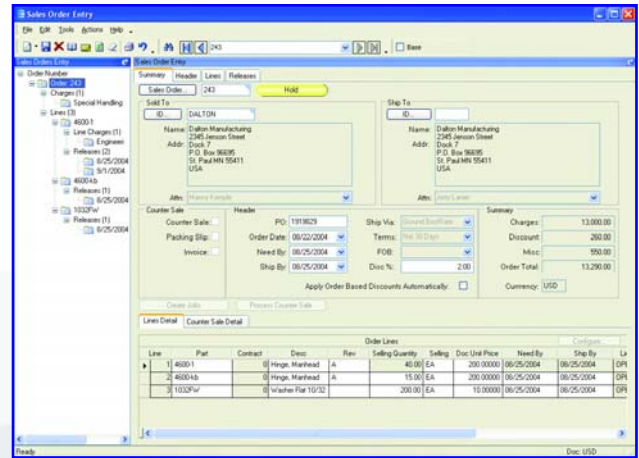
Manage sales commission calculations for direct and indirect sales teams. Allocate commission percentage over multiple sales entities per order line.

**PRICE LISTS**

Generate customer, product group, warehouse, and product specific pricing hierarchies while matching the end user currency. For global enterprises, company, plant, and warehouse pricing offers flexibility in pricing products.

**ORDER-BASED DISCOUNTS**

Apply order-based discounts on an order value or product quantity basis. Optionally override and lock pricing.



*Manage sophisticated sales requirements from the time an order is entered until final shipment.*

**MISCELLANEOUS CHARGES**

Enter unlimited miscellaneous charges or credits on each order header or order line. These charges will then print on the order and carry over to invoicing.

**ORDER TRACKER**

Use the order tracker to see a summarized view of the order, then drill down on selected items to see greater details (e.g., lines, releases, shipments, charges, bookings, audit, and payment information). Use real-time data to link to other parts of the system.

**CAPABLE-TO-PROMISE**

Provide accurate, real-time delivery dates to customers when using Advanced Planning and Scheduling (APS). Furnish a realistic promise date to your customer by finding out how a quote would fit into your current schedule.

**ORDER JOB WIZARD**

Generate appropriate jobs for new orders in a single step that enables the user to create, plan, schedule, and release jobs against multiple lines and multiple releases.

**PROJECT MANAGEMENT**

Link sales orders, jobs, purchase orders, field service calls, tasks, milestones, and budget information to manage projects.

**COUNTER SALES**

Automate the pick-up, shipment and generation of sales invoices



5 Hill Street, PO Box 65 • Kitchener, ON, Canada • N2G 3X4  
 (O) 519-885-2040 • (F) 519-885-5674 • (TF) 866-565-3797



Worldwide Headquarters 18200 Von Karman Avenue, Suite 1000, Irvine, California 92612 USA  
 Phone: (949) 585-3700 Fax: (949) 585-4419 Visit our Web site at www.epicor.com