

Product Configuration

Product Configuration enables on-the-fly configuration of highly customizable and dimensional products via a straightforward question and answer evaluation. Product Configuration can be accessed from quote entry, order entry, and job entry. It is Web-enabled, and is also available to disconnected users employing Vantage mConnect.

APPROVAL

Formally approve all configurations before they can be put into circulation. When a configuration revision has been formally approved, it can be pulled into a quote, order or job. An audit trail logs user ID and approval date.

BILL OF MATERIALS

Tie a configuration to a BOM structure containing multiple options. Each option can also have rules attached. Rules are executed during entry of a configuration to correctly configure the BOM and routing.

REVISIONS

Optionally create unique configurations and rules for each revision of a BOM. Configuration responses are stored with other product information for historical auditing and accuracy.

SCREEN INPUT BUILDER

Build custom screens in which product features and other inputs can be entered during quote and order entry. Form controls (e.g., fill-ins, combo boxes and toggle boxes) are used to prompt users for data.

PRICING

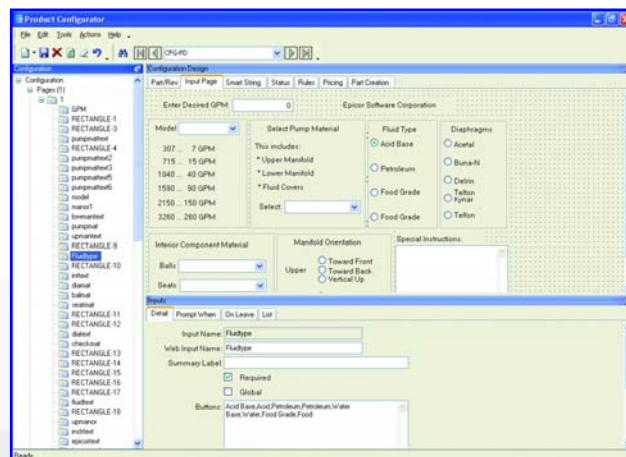
Calculate pricing as a product is configured. Either features/options or rules-based pricing can be applied.

OPTIONS

Define the features and options of a product at design time, then customize during quote and order entry.

RULES

Build your own unique rules with an easy-to-use expression builder. Process rules during quote and order entry to create an accurate BOM from the features and options selected.



Build complex and flexible configuration models with attractive interfaces to customers.

MRP INCLUSION

Configured parts can optionally be included within MRP to help manage mass produced custom product lines.

EXCEL INTERFACE

Optionally interface to Microsoft Excel to map values to tables instead of building complex rules within the configurator.

ENSURE RULE ACCURACY

Test rules and inputs during design mode to eliminate surprises during processing. Full reporting is available as an audit trail.

SMART PART NUMBER

Build a smart part string during entry of a configuration to allow easy identification of the options selected.

CREATE PART NUMBERS

Optionally create actual part numbers in the inventory master file using the configured smart part number. Creating the part automatically eliminates manual entry when a new part is configured and ordered.



5 Hill Street, PO Box 65 • Kitchener, ON, Canada • N2G 3X4
 (O) 519-885-2040 • (F) 519-885-5674 • (TF) 866-565-3797