

Routings

Detailed routings facilitate planning, scheduling and costing of products more efficiently. Everything needed to produce a product is managed in one central location.

Managing changes to routings is simplified. Changes are automatically communicated to the plant floor execution system and operators have online visibility of the latest routing production notes as well as standards and resource requirements.

METHODS OF MANUFACTURING

Manage product BOM and routings in one central location. The part-specific method of manufacturing is controlled through engineering and offers drill-down functionality to lower level subcomponents along with material and routing components required for each.

EASY TO USE INTERFACE

Easily understand, navigate and revise even the most complex, multi-level routing in the tree structure of the engineering workbench. Free up engineers to focus on constructing the most cost-effective build. Quickly build new routings and easily modify existing routings using the Vantage drag-and-drop engineering tools.

EXPEDITE ENGINEERING

Streamline engineering by modifying existing methods for same-as-except quotations and production runs. Enable engineers to begin with an existing method of manufacture from the methods master, a quote or job, then modify it for the project at hand with the Vantage "get details" functionality.

ALTERNATE ROUTINGS

Define and maintain multiple routings or material substitutions under a single part number. In a multi-plant environment, alternate routings at the plant level facilitate choosing where to build the part using plant appropriate methods.

FLEXIBLE PRODUCTION STANDARDS

Manage and measure jobs using traditional time-based production standards including:

- Pieces per hour
- Pieces per minute
- Operations per hour
- Operations per minute
- Hours per piece
- Minutes per piece
- Fixed hours

DIMENSIONAL PLANNING

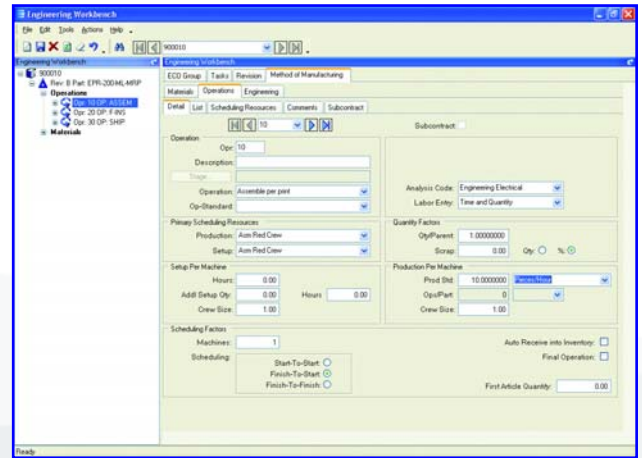
Plan by volume and quantity using dimensional planning that is not time constrained.

DAILY CAPACITY

Add flexibility to your planning with daily production rates that are quantity-based rather than time-based.

RESOURCE PLANNING

Allow the system to automatically pick or schedule the resource to be used or call out the specific resource at the time of planning. Routings can indicate general resource groups needed.



Build a visual view of a routing for a new part using the integration to other engineering information and the drag-and-drop interface.

CAPABILITY PLANNING

With APS you can specify a capability of a resource and allow the scheduling engine to determine the specific resource based on availability of the capability or skill level.

DECIMAL PRECISION

Built to manage the needs of precision manufacturers, the production standard field has 10 characters behind the decimal point.

DEFAULT OPERATION STANDARDS

Enter new routings quickly and easily using default operations and operation standards for resources.

PRODUCTION AND SETUP COST

Perform cost analysis of production separately from setup. This enables tight cost control of these key functions.

FIXED AND VARIABLE BURDEN

Assign resource-specific or variable burden based on the optimization of the schedule and available resources.

SUBCONTRACTING SERVICES

Include outside services in routing steps for accurate planning of costs and lead-time. Communicate with purchasing, shipping and receiving, as well as production management for full visibility of subcontracting operations.

ONLINE ROUTINGS

Communicate the latest routing changes to the shop floor efficiently with the electronic work queue.

DOCUMENT LINKING

Using document management, link product specific documentation (e.g., electronic drawings and machine instructions) for easy access and document control.