

Production Control

The purpose of the production control module is to provide the decision maker with a tool for close and precise monitoring and follow-up on projected production plans and production standards with regard to time and economy.

In this area particularly, full implementation of NAVI Meat will bring considerable financial advantages as the swift adjustment of even minor deviations is crucial to the profitability of a production round.

With the decreasing profit margins generated by the industry, production management on the basis of monthly reports no longer suffices. The ideal basis for management, which NAVI Meat provides, is a snapshot of the financial consequences of the realised production versus the expected consequences.

Due to the fierce competition, it is crucial that companies document deviations dynamically and make adjustments at very short notice. In NAVI Meat, this can be done online on the control manager's computer only a few moments after the deviations occur.

A snapshot of key success factors

The production control module compares the specified standards for yields, shrinkage and time consumption from the calculation module with the realised figures that are retrieved automatically from weighing terminals and other registration equipment.

Those who do not want to retrieve the data automatically from the production can enter the information manually. The NAVI Meat production control module provides reports on the following critical key figures and more. These figures can be presented in printed reports or on screen where the deviations

are shown when they are registered in the production, and updated dynamically during production:

- Realised yield percentages per
 - unit
 - recipe
 - lot
- Realised production versus planned production
- Cold store shrinkage
- Packaging consumption
- Gut yields

Select relevant information and the level of detail

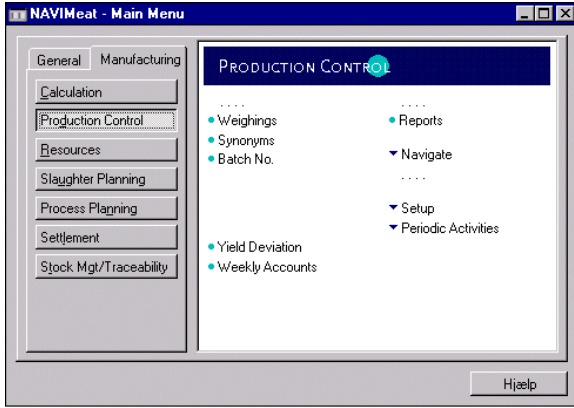
With the advanced features in NAVI Meat, it is possible to filter information so that only deviations above a selected percentage level or above a selected financial level are shown, depending on individual needs.

This is a very direct way of focusing on the deviations. The causes of deviations can be analysed by starting at a general level and retrieving more and more detailed information by clicking down through the system. At the lowest level of the hierarchy, you find a specific weighing registration – the lowest possible source of the deviation. This feature is a very quick and efficient method of tracing deviations.

See developments in yields

Developments in yields over a time period can always be viewed. You can choose to study developments per day, week, month, quarter or year.

This provides a strong statistical basis for evaluating possible adjustments of the recipes, for example, but also for measuring the effects of investments in the



Production Control - 2

production. Any manager would like to check whether the assumptions which have formed the basis for an investment calculation have actually held.

Using the yield control as a measure of product quality

As agreements with customers are made on the basis of certain agreed and fixed guidelines, which the company specifies in its recipes, it is, in principle, possible to use the yield percentages as a measure of product quality.

In principle, any deviation from the specified yield percentages is a sign that the delivered quality is not correct. A negative deviation from the specified yield percentages may indicate that the delivered quality is too high. On the other hand, a positive deviation from the specified yield percentages may indicate that the delivered quality is too low.

Of course, you can only use this measurement if the raw materials are of a sufficiently uniform quality from one week to the next. However, the recipes should be based on data that take account of possible fluctuations.

Registration Structure

The production control module covers both slaughtering and meat-processing. The level of detail in this follow-up function depends very much on how fine-meshed the web of measuring points in the production is. When you design this structure, it is crucial to identify the strategically most important measuring points. Typically, these have the following properties:

- The physical transition of the product from one department to the next
- The transition of the product from one process to the next

With NAVImeat, a registration structure can gradually be built up to reflect the needs and development of the company.

NAVImeat helps manage stocks

On the basis of registrations in production, which are entered in the production control module automatically or manually, NAVImeat can control stock transactions between the various stock sections. In this way, NAVImeat not only controls the quantitative write-ups and write-downs of stocks, the system also controls the correct pricing of the products. This means that the inventories of NAVImeat will always show the actual size and value of stocks.

Production account

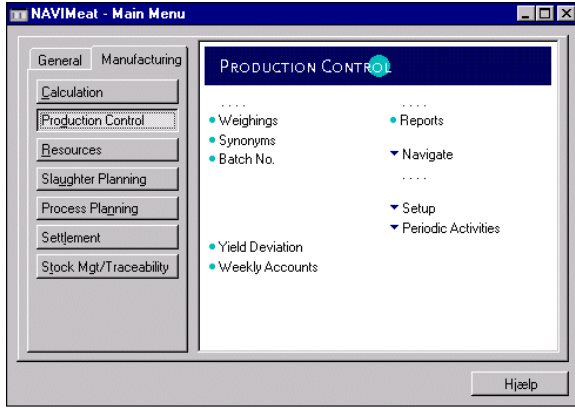
NAVImeat contains a very important and unique weekly accounting system that describes the results achieved at the factory and at the profit centre. The production account is a tool which can be used by the management to get a general picture of a week's production. The production account includes all important deviations from the standard in the following areas:

- Yields
- Stocks
 - quantity
 - value

In the production account you can also analyse the causes of deviations by starting at a general level and getting more and more detailed information by clicking your way down through the system in search of explanations.

Process-Stocks-Process

By using the principle of Process-Stocks-Process, NAVImeat creates a financial picture of the profitability and effectiveness of each profit centre.



Production Control - 3

This makes it possible to explain all deviations by either stock or process shrinkage. The cause of deviations can therefore always be identified unambiguously.

Solid experience and thorough control

The meat industry is constantly changing, not least with regard to the methods and tools available for production management. This is often reflected in the specification of new recipes that are more profitable because of the improved possibilities for analysis and control.

With the monitoring capacity and the cause analysis feature of the production control module, the company gets a solid information basis for adjusting cur-

rent standards and designing new standards for its production. With NAVI meat, you are thus better equipped to meet the competition of the future.

In addition to this, the thorough monitoring of production by the production control module gives you a number of very definite and measurable advantages by making it possible for you to compare the specified standards with the actual production data. This is a good basis for acting effectively on deviations.

The NAVI meat production control module is thus more than just a monitoring tool. It also allows for an analysis of the causes of deviations, while providing users with an even better basis for future production activities. The production control module improves the company's competitiveness - now and in the future.